

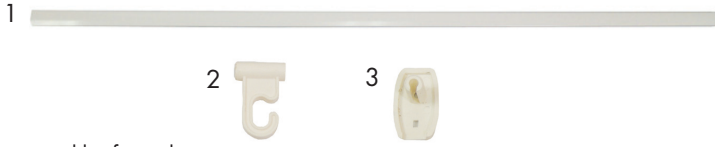
## Product Specifications

Maximum Graphic Width: 48"  
Color: Silver/Black

## Product Parts

- 1 - Banner Rail
- 2 - Hook (x2)
- 3 - End Cap (x2)

\*Cut Banner Rail with saw to width of graphic



## Product Set-Up

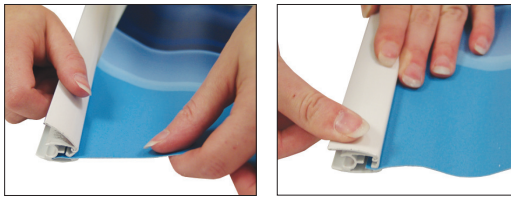
### Step 1

Remove parts from box and lay on a flat, clean surface.

\*The Banner Rail (1) ships with the Hooks (2) and End Caps (3) installed. When removing items from the protective plastic, the Hooks and End Caps may come off the Banner Rail.

### Step 3

Insert the Graphic into the small opening made at the bottom edge of the Banner Rail (1). Be sure that the Graphic is held evenly along the length of the Banner Rail (1). Close the Banner Rail (2) by pushing the top front edge downwards.



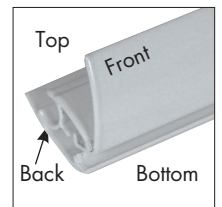
### Step 5

Follow the Hooks (2) with the End Caps (3) by inserting the Round Notch into the Circular Groove of the Banner Rail (1).



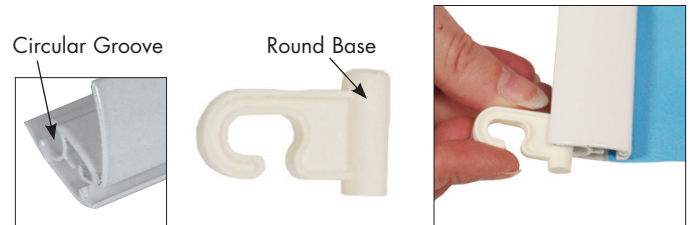
### Step 2

Remove the End Caps (3), if attached to the Banner Rail (1), and open the Banner Rail (1) by separating the top front and back edges.



### Step 4

If the Hooks (2) came off of the Banner Rail (1), carefully line up the round base of each Hook (2) with the circular groove in the top of the Banner Rail (1) and slide them both into place.



### Step 6

Attach the Hooks (2) to your Hanging Hardware (not included) and attach to the wall or ceiling as desired.

## Storage

Place all product parts in box and store in a cool, dry location.

## Care

To clean, wipe with damp cloth.

Warranty Information: All products are designed to provide the user with a cost-effective and durable product. Standard warranty is a 'one year parts and labor' warranty which warrants product against defects in material and workmanship. It does not cover damage due to accidents, abuse, or normal wear and tear. Products found to be defective will be replaced or repaired at factory's discretion.