

Instructions For:

# Promotion Counter

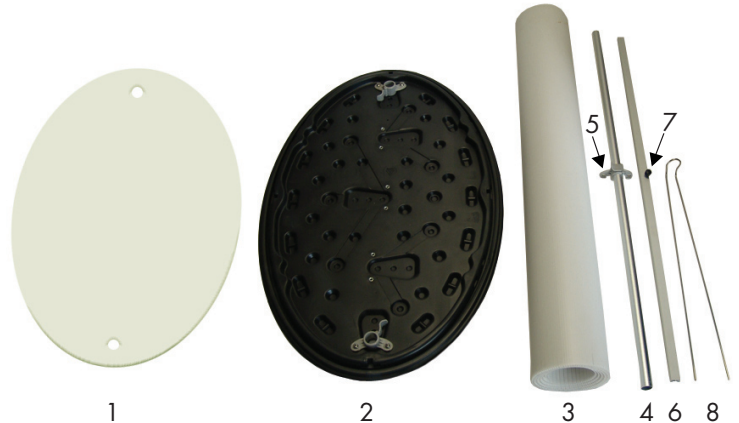
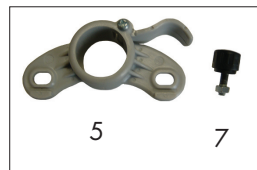


## Product Specifications

Total Graphic: up to 36" H x 64" W  
Front Graphic Area: 36" H x 40" W  
Foot Print Dimensions: 38.5" x 20"

## Product Parts

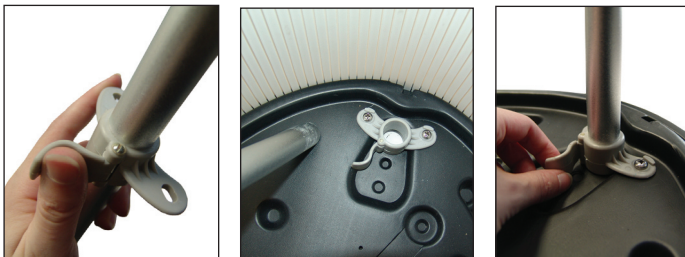
- 1 - Shelf - Corrugated
- 2 - Counter Top / Bottom (interchangeable) (x2)
- 3 - Outer Wall / Graphic (Corrugated)
- 4 - Support Poles (x2)
- 5 - Shelf Support Clamps (x2)
- 6 - End Rails (x2)
- 7 - Shelf Support ScREW (x2)
- 8 - Shelf Support Wire



### Step 1

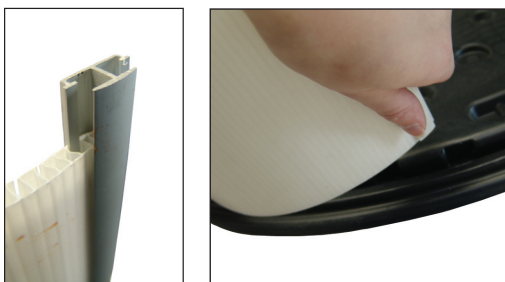
Remove all parts from the packaging.

Place each Shelf Support Clamp (5) halfway up each Support Pole (4) and tighten.  
Place each Support Pole (4) into the clamps on the Counter Bottom (2), and tighten.



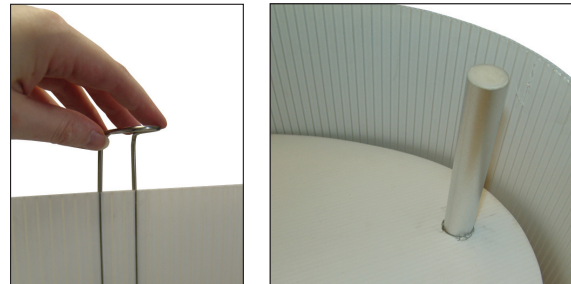
### Step 2

Slide the End Rails (6) onto the ends of the Outer Wall / Graphic (3).  
Line up one End Rail (6) with the slight indent in the wedge along the circumference of the Counter Bottom (see image below) and fit the Outer Wall / Graphic into the groove all the way around.



### Step 3

Slide the Shelf Support Wire (8) into the cut corrugates on the back center of the wall / graphic with the loop facing inwards, and push to the bottom.  
Place the Corrugated Shelf (1) over the Support Poles (4) and slide down into place.



### Step 4

Place the Counter Top (2) on top. Line up the Poles (4) with the clamps on the Counter Top, and the Wall / Graphic with the outer circumference groove. Gently but firmly press into place and tighten the clamps

